

Installation Manual for 2-function concealed shower

Please read this manual carefully before installation and use, and keep it properly.

2 Accessories List

No.	Name	Quantity
01	Embedded box	1
02	Shower Arm	1
03	Shower head	1
04	Shower hand	1
05	Shower Bracket	1
06	Flexible hose	1
07	Shower hose	1
08	Accessories	1
09	Manual	1

Please check if the material is consistent with the description or not, Whether the quantity meets the listed.

4 Assembly steps

1

PTFE tape is required for sealing where threaded connection.

Hot water

Cold water

Heating the tip with hot melt glue gun, and attach to the connector

Attached to shower head

Attached to shower hand

Hot water

Cold water

The connector is applied (which needs to be sealed with PTFE tape) between the main body and the pipe as adapter performance.

1 Installation Precautions

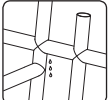
- ① After opening the product package, please check the accessories listed in the "Standard Accessories List" to check whether the spare parts are complete or not? Please contact your local dealer immediately if something was missing.
- ② The installation size of the embedded pipeline should match the basic installation size of the product.
- ③ The main part of the faucet has been inspected and tested by the factory, please do not disassemble and assemble by yourself, in order to affect the performance of products.
- ④ Special attention must be paid to the cold and hot water pipes of the faucet: the left connects the hot water and the right connects the cold water. Incorrect connection will only produce cold water but not hot water.
- ⑤ Before installing the faucet, be sure to remove the impurities and sludge in the embedded water pipe to avoid blockage. Avoiding affecting the water outlet function!
- ⑥ After installation, please turn on the water source, and then check whether the standby connection is tightly connected to ensure that there is no leak.
- ⑦ Applicable pressure: 0.05Mpa~0.75Mpa; Applicable water temperature: 4°C ~80°C (104° F-176° F). Constant applicable water pressure of warm shower: 0.1Mpa~0.5Mpa, and the pressure difference between cold and hot water cannot exceed 0.2Mpa; The hot water temperature of the constant temperature shower needs to reach 55~80°C (131° F-176° F).
- ⑧ The hose should not be bent excessively. Make sure that the hose is not deformed after installation.



No disassembly

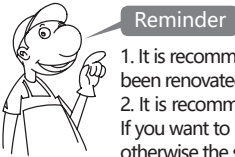
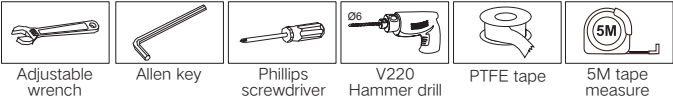


Flush the pipe



Check the pipeline

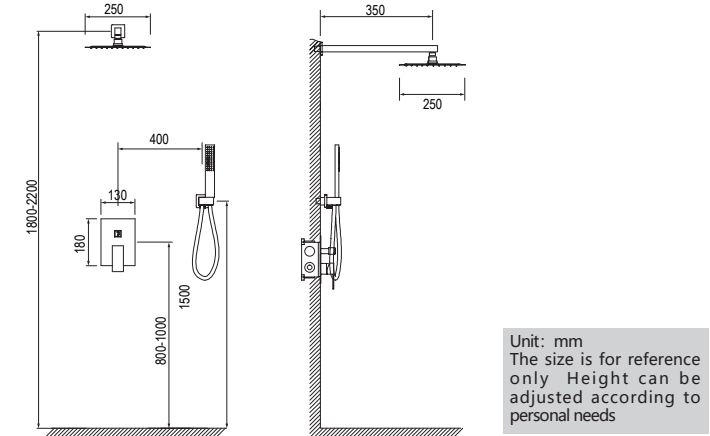
Prepare the following tools before installation



Reminder

1. It is recommended to install the faucet two months after the house has been renovated.
2. It is recommended not to install the faucet in a corrosive environment. If you want to install it, please clean it frequently. The surface of the faucet, otherwise the service life of the faucet will be shortened.

3 Drawing



Our company has continuously improving and changing the design and performance of its products; and reserves the right to change its products without notice.

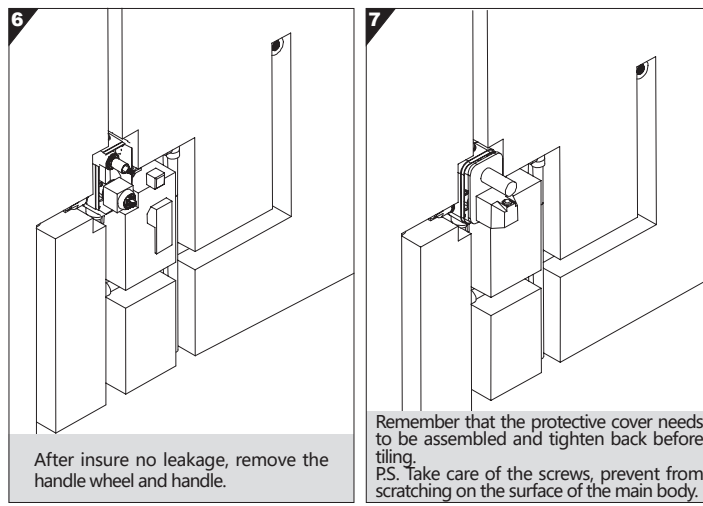
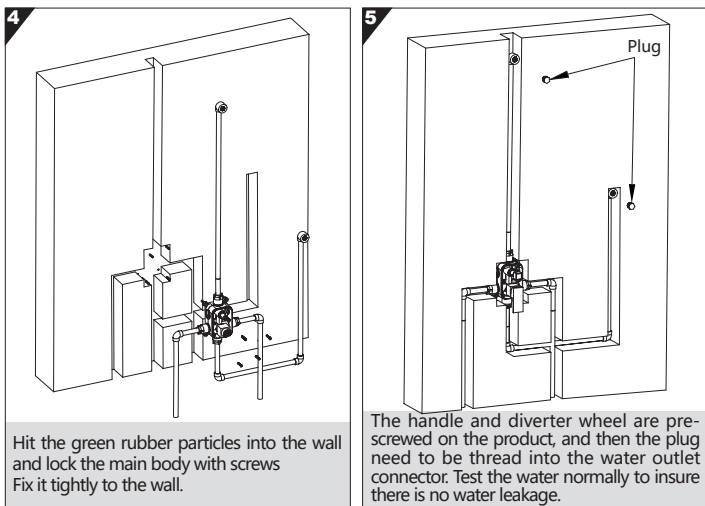
2

The connector is applied (which needs to be sealed with PTFE tape) between the main body and the pipe as adapter performance.

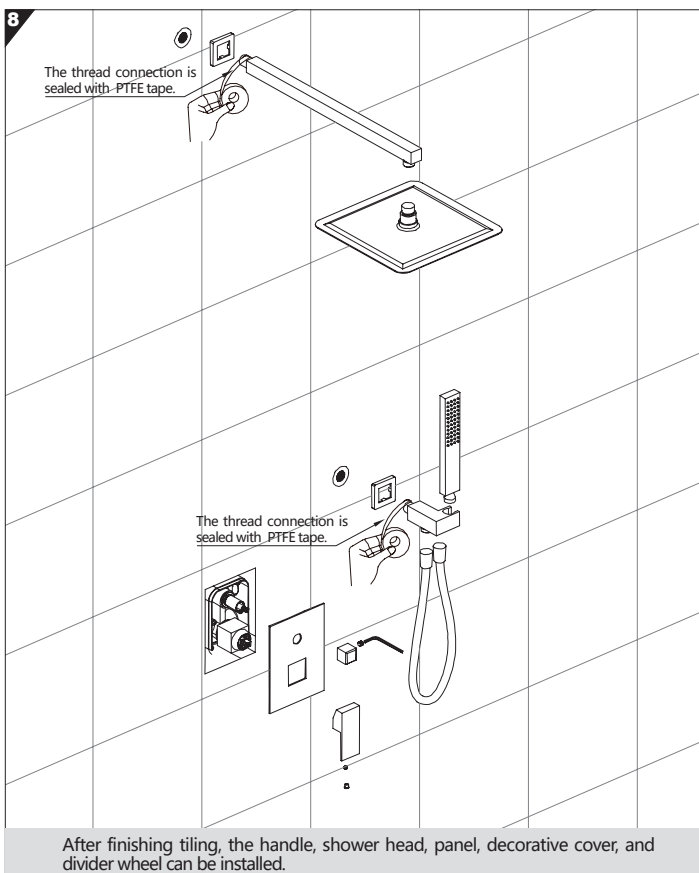
3

Drilling the wall according to the drawing size, and then grooving.

## 4 Assembly steps



## 4 Assembly steps



## 5 Maintenance

Please clean the faucet frequently or regularly in order to keep the surface of the faucet bright and clean.

- Frequently wash with clean water, dry the faucet with a soft cotton cloth.
- Do not use detergents or nylon brushes containing coarse particles such as scouring powder or polishing powder Sweep to avoid abrasion of the product.
- Since acid detergent can corrode the coating, it should not be used. If acid washing is made, the tiles and utensils should be fully washed immediately to avoid them flows to the surface of the faucet
- When using, do not pull the shower hose forcefully to prevent the hose from cracking.

- If you need to do a lot of cleaning work, please follow the following procedures
- Use clean water and rags to remove dirt and scale films on the surface as much as possible.
- Use any of the following cleaning detergents to remove dirt and scale films:  
Mild liquid cleaner  
Colorless glass cleaner, non-abrasive and completely dissolved powdery cleaner detergents (and mix as instructed)  
Polishing fluid without abrasion
- After cleaning, please use clean water to remove all the detergent and dry it with a soft cotton cloth. and corrodes the faucet.



## 6 5-year limited liability guarantee certificate

Our products are manufactured under high-quality standards and production processes. The company guarantees that the original consumer and hotel industry buyers, during the valid period, if there is leakage or dripping, the company will provide the required parts free of charge, in order to make the product returned to good condition.

This guarantee is effective from the date indicated on the purchaser's original receipt.

This guarantee is only valid for original consumers and buyers in the hotel industry, and does not include the use of this product in the industry, commerce, trade and hotel industry, and product damage caused by error installations, product abuse or product misuse. Although the mentioned damage is caused by the construction contractor, the service company or personal installation, the company will not be responsible for the labor costs or product damage caused by the installation, maintenance, and replacement, and will not be responsible for the consequential damage.

After-sales maintenance:

- The main body and cartridge are guaranteed for 5 years.
- For repairs that occur outside the warranty period, parts cost and repair fees will be charged.

The following conditions are not covered by the warranty:

- Improper use, maintenance and abnormal conditions.
- Failures and damages caused by disassembly and repair by technicians, not by our company or our company's dealers.
- The warranty card, invoice or product model noted by the purchaser is not consistent.
- Unauthorized alteration of warranty certificates, invoices or purchase vouchers.

